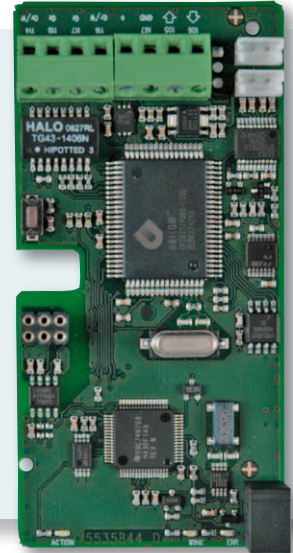


IP201

DATA SHEET

- Configuration of static or dynamic IP address
- Status LEDs for ethernet and service indication
- 2 pulse inputs (only for MULTICAL®)
- NAT penetration and white list firewall
- Serial connection to external units (only RF Concentrator)



TCP/IP module for RF Concentrator, MULTICAL® and M-Bus Master

The IP201 module is installed directly in the module area of Kamstrup's RF Concentrators, MULTICAL® 602, MULTICAL® 801 or M-Bus Master.

This compact solution provides the utility company with the possibility of reading counts and logging values via the internet or a local net. Kamstrup recommends using closed networks, and the IP201 module is therefore capable of operating behind a NAT/firewall.

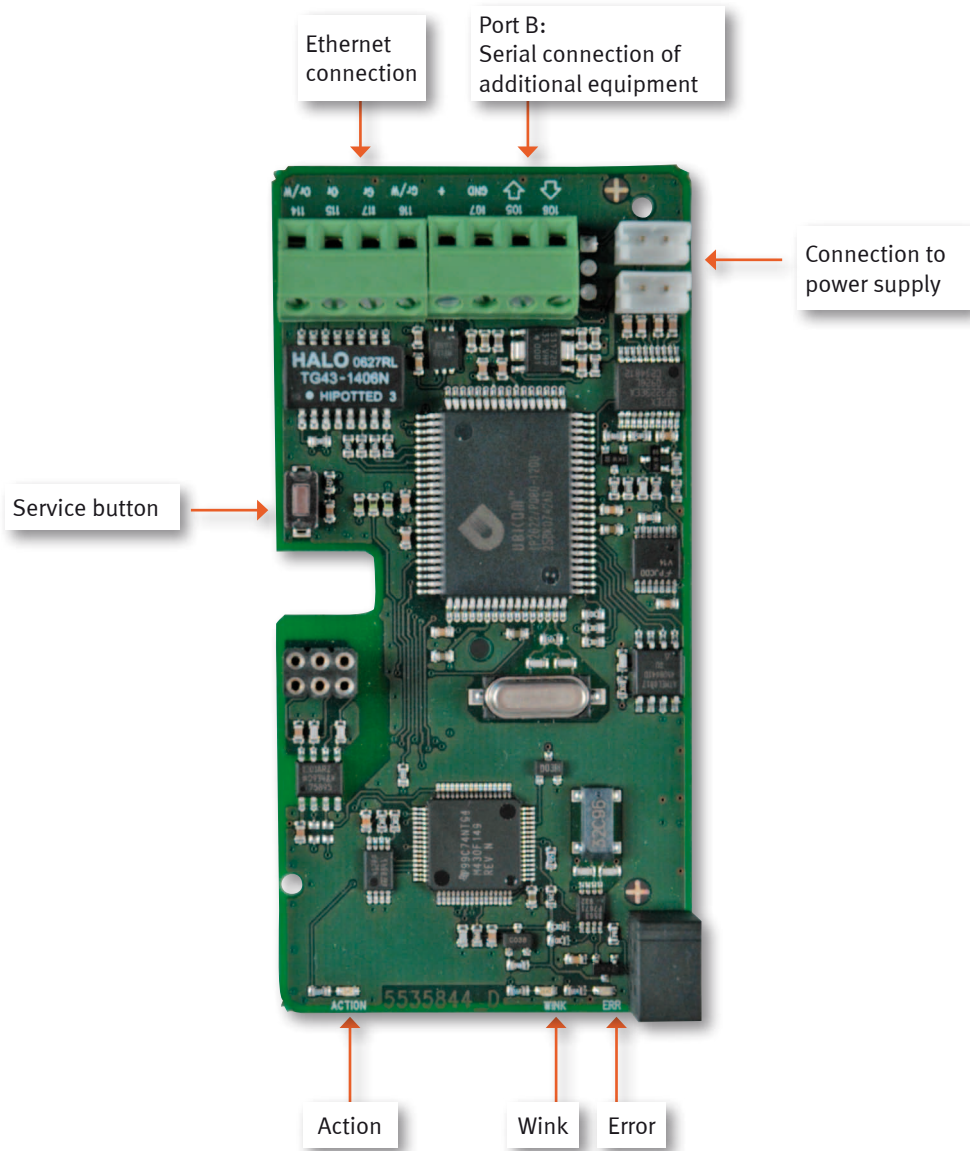
The module can be ordered pre-configured for plug-and-play installations or with default configuration which can be changed as required.

It is possible to order a PC tool for configuration of the module by contacting Kamstrup A/S.

IP201

DATA SHEET

Connection diagram



IP201

DATA SHEET

Technical data

Communication

Protocol	TCP/IP, UDP
Ethernet	10 Mbit

Electrical data

Supply	Is supplied via high-power supply from the unit in which it is mounted.
Power consumption	< 450 mW

Mechanical data

Dimension (wxhxd mm)	41x19x41
Temperature, storage	-40 - +70°C
Temperature, operation	-40 - +60°C
Relative humidity	< 95%

Marking/Approvals

EMC	EN61600-6
CE marking	
RoHS	
MID approved for mounting in MULTICAL® 602 and MULTICAL® 801.	

IP201

DATA SHEET

Ordering

RF Concentrator with TCP/IP module

6699 YYYYY (Licence frequencies)

6699 ZZZZZ (Licence-free frequencies)

Module for M-Bus Master

Is ordered as a separate module for M-Bus Master – top number: 670XXXXX.MBM

Module for MULTICAL® 602

Is ordered as a separate module for MULTICAL® 602 – top number: 602XXXXX

Module for MULTICAL® 801

Is ordered as a separate module for MULTICAL® 801 – top number: 670XXXXX.801