

PadPuls M4

Records 4 pulse generators simultaneous

Integrated LC-Display

Due-date function

Power supply by the M-Bus

All pulse inputs free adjustable

Fully functional at M-Bus failure !



The PadPuls M4 makes up to four conventional meters with pulse output M-Bus compatible in an easy manner. Each of the four inputs can be parameterized practically at will and thus be adapted to existing installations. So the PadPuls M4 combines four M-Bus impulse adaptors in a single unit ! It provides the possibility to read actual meter data on-site by the integrated LC display without any auxiliary devices.

The built-in battery ensures that it is fully operable even if the M-Bus network fails. Additional security is provided by the periodic saving of the meter readings in non-volatile memory.

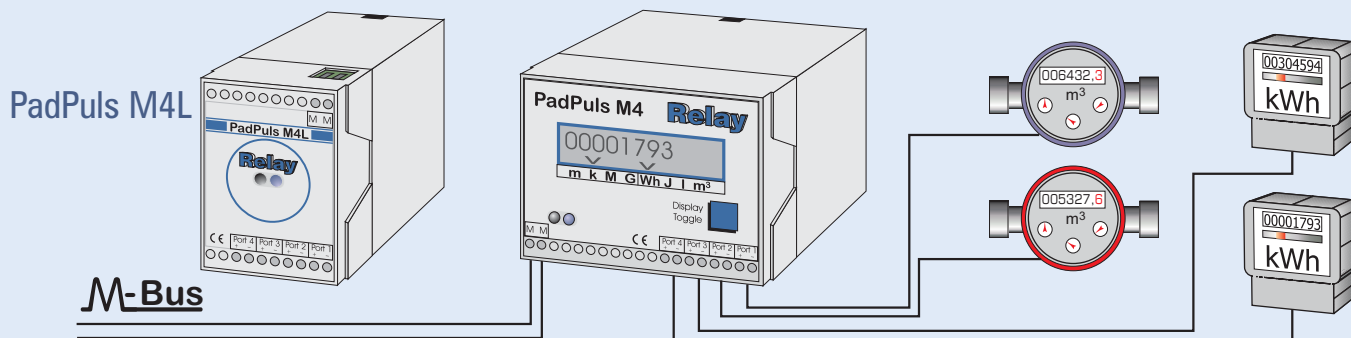
By these features and the integrated display the PadPuls M4 can also be operated as a M-Bus independent remote display.

Relay

PadMess

Looking for contact:

PadPuls M4



Function of the PadPuls M4(L)

The PadPuls M4 adapts up to four impulse meters with floating output (for example gas, water, electricity meter,...) to the M-Bus system. The four pulse inputs can individually be configured. Thus PadPuls M4 acts as four stand-alone M-Bus slaves. Depending on the setting, the recorded impulses are converted into units of measurement and can be displayed on the built-in LCD on-site by keystroke.

The supply for the impulse counting function is taken from the M-Bus. In case of a bus failure an integrated battery ensures data integrity and counting operation.

By the battery, the optical interface and the LCD, it is also possible to operate the PadPuls M4 as a remote display without the M-Bus (stand-alone operation). The due-date function is another PadPuls M4 feature. Meter data are saved separately at the preset due-date by the implemented clock with calendar function. Thus, for example, annual consumption data can be obtained without additional calculation software.

The PadPuls M4L version has the same functional features as the M4, but includes no LCD.

Technical data

Power supply :	by M-Bus, switches automatically to battery in case of bus failure
Bus operation:	max. 3mA (2 unit loads)
Battery operation:	power input max 60µA
Battery expectancy:	only battery operated: 3 years with optional battery: 8 years
Temperature range:	0 .. 55 °C
Pulse inputs:	4, individual setup
Contact voltage:	2.5V .. 3.6V
Contact current:	30µA
Debouncing time:	5ms
Cable:	max. 10m

Requirements to the contacts of the pulse generators:

Potential:	floating
Resistance:	open > 1MΩ, closed < 2kΩ
Contact duration:	min. 30ms
Pulse interval:	min. 30ms
Pulse frequency:	max. 14 Hz
M-Bus protocol:	according to EN1434-3
Transmission rate:	300, 2400 baud (auto-baud detect)
Case mounting:	rail or wall mounted
Protection type:	IP40
Dimensions (M4):	W x H x D: 100 x 77 x 110 mm
Dimensions (M4L):	W x H x D: 55 x 77 x 110 mm

Order information

PadPuls M4	Art.-No. IM002GD
PadPuls M4L	Art.-No. IM002G

Delivery contains:
PC-Software for configuration of PadPuls devices

Accessories

Optical head for RS232	Art.-No. OK001
<u>M-Bus readout software:</u> Look@M-Bus für Windows95/98/NT	Art.-No. SW006



Reinecke Elektronikentwicklung und Layout GmbH
Stettiner Str. 38
D-33106 Paderborn
www.relay.de
Tel.: 05251 / 1767-0
Fax.: 05251 / 1767-20
EMail: info@relay.de



Meß- und Kommunikationstechnik GmbH
Stettiner Str. 38
D-33106 Paderborn
www.padmess.de
Tel.: 05251 / 1769-0
Fax.: 05251 / 1769-20
EMail: info@padmess.de